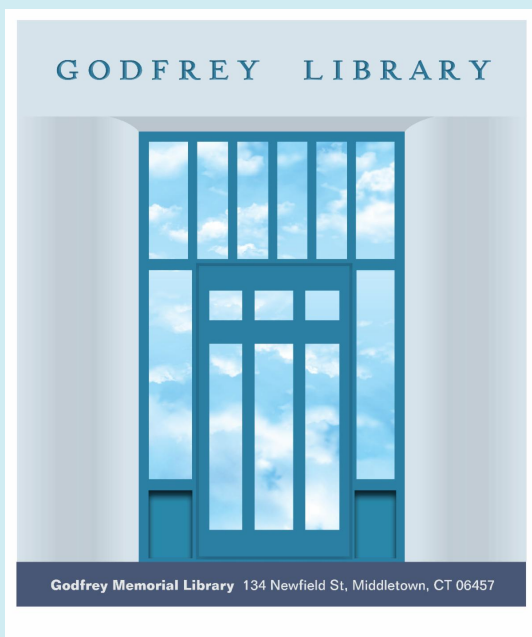
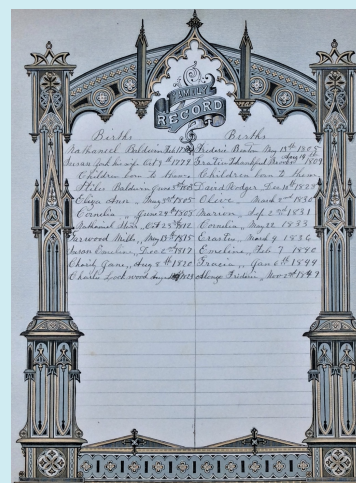


Godfrey news & updates

May 2023| Number 3 Issue 9



This month's Genealogy Club presentation: Carol Ansel, Death Records at the Godfrey and Beyond



See you at NERGC in Springfield and NGS in Richmond?

If you can make it to NERGC this week, there will be a Godfrey contingent there staffing our booth in the Exhibit Hall. Carol will be giving a presentation on Thursday at 4:30. While she'd love the moral support, don't worry if you miss it, as she will relieve it for May Genealogy Club.

Al Fiacre and Carol Ansel will also be attending the National Genealogical Society Conference in Richmond, Va. at the end of May. Please be sure to introduce yourself if you see us there -- we love to meet our members face-to-face! Maybe we'll get to meet some of our mid-Atlantic and Southern members!

On **Saturday, May 20**, Carol Ansel will be giving a talk on the many types of death records that can be found online, with an emphasis on the Godfrey's resources. She promises she will not bore you to death.

The Zoom presentation will take place at **1:30 pm (EST)** on May 20th.

HistoryGeo-dot-com is Here!

Premium Godfrey Scholar members can

If you saw Carol's presentation last month, she talked about a variety of mapping resources, one of which was historygeoDOTcom. We now have a working subscription with them, which gives Premium members 24/7 home access! Give it a try -- you can find it under both "External databases" and "Maps." It has 3 segments -- Antique maps (which includes cadastral maps, searchable by name), First Landowners Project (where you can find land grants via the Bureau of Land Management) and Place Finder + Topos (names of geographical features and topographic maps).

register for free at the following email: [GML GenClub May 2023](#)

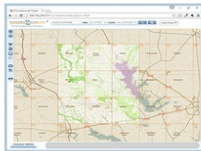
If you are not a GML Premium member and want to view the presentation, you can pay \$10 via PayPal (click below on "Buy Now"), **then** return to this email and register at [GML GenClub May 2023](#).

Buy Now



Antique Maps Collection

Our ever-expanding collection of antique maps and atlases.



Place Finder + Topos ALL-NEW!

A comprehensive place-finder for the Continental U.S. Locate by geographic features (creeks, streams, churches, cemeteries, mountain, river, etc.) or by the name of a county, town, city, civil township, USGS Topo-Quad, or dozens of other name-types. When there, you can view one or more Topographic Maps containing the spot you've searched.



First Landowners Project

Displays original landowners of the continental United States according to state and federal records. At present it covers 21 states and contains over 9 million records.

Books added to Our Collection

Many of the items on this month's list are call number adjustments on books already on our shelves. You can tell that our inventory volunteers are in the Pennsylvania section! Volunteer Molly Felth also cataloged our microfilm holdings of the Middletown/Penny Press, which is not on the list, but will now show up in our catalog!

[New Book List for April.](#)

Godfrey Memorial Library 134 Newfield St. Middletown, CT 06457



If you don't wish to continue receiving this newsletter, click below on "update profile" and uncheck "newsletter." Please be sure that "Email List" and/or "Connecticut Contacts" are checked to continue receiving our regular important notifications. We do not share or sell our member list with anyone.

WARNING:

Please DON'T click on "[unsubscribe](#)" -- it will remove you from *all* our lists including important notifications.